

## RT9130E-2 Product guide

EN13000  
Metric 85 %



 120 t

 48,8 m

 11,0 - 18,0 m

 85 m

# GROVE RT9130E-2

Impressive 120 t capacity and full vision cab to keep the operator comfortable and maximize productivity.

Herausragende 120t Traglast und eine optimale Sicht aus der ergonomisch gestalteten Kabine sorgen für unschlagbaren Komfort und steigern die Produktivität.

Impressionante 120t de capacité avec cabine vision intégrale offre à l'opérateur un plus grand confort et un meilleur rendement.

Impresionante capacidad de 120t con cabina de visión completa para mantener el confort del operador y maximizar la productividad.

Impressionante portata di sollevamento 120 t e cabina ad ampia visibilità per garantire comfort dell'operatore e massimizzare la produttività.

Capacidade impressionante de 120t e cabina com excelente visibilidade para manter o conforto do operador e maximizar a produtividade.

Впечатляющая грузоподъемность 120 т и кабина серии "Full vision cab" с отличным обзором, обеспечивают комфорт оператора и максимальную производительность.

## Features

### ► Boom • Ausleger • Flèche • Pluma • Braccio • Lança • Стрела

The Grove MEGAFORM® boom shape eliminates weight and increases capacity compared to conventional shapes. Large wear pads provide superior boom alignment when telescoping, and allow an excellent transition of weights between sections.

Durch das spezielle Design des Grove MEGAFORM®-Auslegers kann im Vergleich zu konventionellen Auslegern Gewicht eingespart und Leistung gesteigert werden. Große Gleitstücke sorgen für eine optimale Ausrichtung des Auslegers beim Ausfahren und ermöglichen eine ausgezeichnete Verteilung des Gewichts zwischen den Teleskopteilen.

La forme de la flèche Grove MEGAFORM® réduit le poids et augmente la capacité par rapport aux formes conventionnelles. Les grandes plaques d'usure optimisent l'alignement de la flèche lors du télescopage et permettent une excellente répartition des charges entre les sections.

La pluma con forma Grove MEGAFORM® reduce peso y aumenta la capacidad en comparación con las formas convencionales. Las grandes placas de desgaste proporcionan una mejor alineación de la pluma durante la extensión y permiten una excelente transición de pesos entre las secciones.

La sezione del braccio Grove MEGAFORM® riduce il peso e aumenta la capacità rispetto alle configurazioni convenzionali. I pattini di scorrimento di grandi dimensioni garantiscono un allineamento del braccio telescopico di livello superiore e consentono una transizione eccellente dei pesi tra le sezioni.

A forma MEGAFORM® das lanças Grove proporciona uma redução de peso e um aumento de capacidade quando comparado com as formas tradicionais. As grandes placas de desgaste fornecem um melhor alinhamento da lança aquando da telescopagem, permitindo uma excelente repartição dos pesos entre as secções.

Модель MEGAFORM® boom снижает вес и увеличивает грузоподъемность по сравнению со стандартными моделями. Большая поворотная опора обеспечивает идеальное выравнивание стрелы во время юстировки и превосходное перемещение грузов между секциями.



### ► Boom extension • Auslegerverlängerung • Rallonge de flèche • Extensión de pluma Prolonghe del braccio • Extensão da lança principal • Удлинитель стрелы

A 11-18 m offsettable bi-fold lattice swingaway extension and two 8 m inserts give the RT9130E-2 a maximum tip height of 85 m. A hydraulically offsettable bi-fold lattice swingaway is also available, and conveniently offsets from 0° to 40° from the operator's cab.

Durch eine 11-18 m lange abwinkelbare Doppelklappspitze in Gitterbauweise und zwei 8 m lange Zwischenstücke bietet der RT9130E-2 eine maximale Arbeitshöhe von 85 m. Außerdem ist eine hydraulisch abwinkelbare Doppelklappspitze in Gitterbauweise mit zweckmäßigen Winkelstellungen von 0° bis 40° im Verhältnis zur Bedienerkabine verfügbar.

l'extension en treillis escamotable à double repli et déportable, de 11-18 m, et les deux rallonges de 8 m permettent d'obtenir avec la RT9130E-2 une hauteur maximale de la tête de flèche de 85 m. Une rallonge hydraulique en treillis escamotable à double repli et déportable est aussi disponible et permet un déport de 0° à 40° par rapport à la cabine de l'opérateur.

Una extensión de plumin de celosía articulado de 2 secciones abatible de 11-18 m y dos estabilizadores de 8 m aportan a la RT9130E-2 una altura máxima en punta de 85 m. También hay disponible un plumin de celosía articulado de 2 secciones y abatible hidráulicamente que puede inclinarse de 0° a 40° desde de la cabina del operario.

Un falcone tralicciato inclinabile da 11-18 m e due inserti da 8 m forniscono un'altezza massima in punta di 85 m. E' anche disponibile un falcone tralicciato ripieghevole, che si inclina idraulicamente da 0° a 40° dalla cabina operatore.

Uma extensão da estrutura oscilante conjugada compensável de 11-18 m e dois acessórios de 8 m proporcionam ao RT9130E-2 uma altura máxima da ponta de 85 m. Está também disponível uma estrutura oscilante conjugada compensável hidráulicamente e é compensada de 0° a 40° a partir da cabine do operador.

двухсекционный поворотный решетчатый удлинитель длиной 11-18 м и две вставки длиной 8 м обеспечивают RT9130E-2 максимальную высоту оголовка 85 м. Также предлагается двухсекционный решетчатый удлинитель с управляемым из кабины оператора гидравлическим поворотным устройством на 0°-40°.



### ► Cab • Kabine • Cabine • Cabina • Cabina • Cabina • Кабина

New full-vision cab, all-steel fabricated with acoustical lining and tinted safety glass throughout. The cab tilts up to 20° providing the operator additional comfort when working at long boom and extension lengths.

Neue Rundumsichtkabine, in Stahlblech ausgeführt mit Schalldämmung und mit getöntem Sicherheitsglas. Die Kabine lässt sich um bis zu 20° neigen und bietet dem Bediener so zusätzlichen Komfort bei Arbeiten mit langem Ausleger und Verlängerung.

Nouvelle cabine panoramique tout acier, fabriquée avec une isolation sonore et un vitrage teinté de sécurité sur tout le pourtour. La cabine bascule jusqu'à 20° pour apporter à l'opérateur un confort supplémentaire lors du travail avec de grandes longueurs de flèche et d'extension.

Nueva cabina de visión panorámica, fabricada totalmente en acero con revestimiento acústico y cristal de seguridad en toda ella. La cabina se inclina hasta 20° para mayor comodidad del operario cuando trabaja con la pluma larga y tramos de extensión.

Nuova cabina ad ampia visibilità, completamente realizzata in acciaio con rivestimento acustico e vetri di sicurezza colorati. La cabina si inclina fino a 20° per fornire all'operatore ulteriore comfort quando lavora con braccio esteso e prolunghe del braccio.

Nova cabina panorâmica, que permite uma visibilidade completa, fabricada integralmente em aço com isolamento acústico e vidro de segurança escurecido. Cabina inclinável até 20°, permitindo ao operador maior conforto quando a grua está a trabalhar com comprimentos de lança maiores ou com as extensões adicionais.

новая кабина с полным обзором, полностью стальная с полной акустической облицовкой и тонированным предохранительным стеклом. Кабина наклоняется до 20°, обеспечивая оператору дополнительный комфорт при работе с длинной стрелой и вставкой.



## Customer Support

### ► Service • Service • Atención al cliente • Service • Assistenza • Обслуживание

Our customer service extends beyond any borders. Our locations span the globe, with representation on five continents. Wherever you are, we are there to help.

Unser Kundendienst ist grenzüberschreitend für Sie da. Wir haben Standorte weltweit, mit Vertretungen auf fünf Kontinenten. Wo Sie auch sind, wir sind für Sie da.

Nuestro servicio de atención al cliente traspa fronteras. Tenemos oficinas en todo el mundo, con representación en cinco continentes. Allí donde esté, le ayudaremos.

Notre service client s'étend au-delà des frontières. Nos sites sont répartis partout dans le monde. Où que vous soyez, nous sommes là pour vous aider.

Il nostro servizio clienti non ha confini. Abbiamo sedi sparse in tutto il mondo, con rappresentanze in cinque continenti. Ovunque vi troviate, siamo a vostra disposizione per aiutarvi.

O nosso atendimento ao cliente vai além de qualquer fronteira. Estamos presentes no mundo inteiro, com representação nos cinco continentes. Onde quer que você esteja, estamos lá para ajudar.

Наше сервисное обслуживание клиентов выходит за пределы границ. Мы имеем представительства по всему миру, на пяти континентах. Мы всегда готовы прийти на помощь, где бы вы ни находились.

### ► Parts • Ersatzteile • Piezas • Pièces • Componente • Детали

However, remote the job site, locating the correct part quickly is vital to managing your operations. With Manitowoc Customer Support, the parts you need are just a phone call or click away.

Wir wissen, egal wie abgelegen der Einsatzort, das schnelle Auffinden des richtigen Teils ist unerlässlich für das reibunglose Weiterlaufen Ihres Betriebs. Mit dem Manitowoc-Customer Support sind die Ersatzteile, die Sie brauchen, nur einen Anruf oder Mausklick entfernt.

Por muy lejos que esté el lugar de trabajo, encontrar la pieza correcta con rapidez es esencial para gestionar sus operaciones. Gracias al servicio de atención al cliente de Manitowoc, basta con hacer un clic o una llamada para conseguir las piezas que necesita.

Quelle que soit la localisation de votre chantier, il est essentiel de trouver rapidement la bonne pièce. Avec le service d'assistance client de Manitowoc, les pièces dont vous avez besoin ne sont qu'à appel téléphonique ou un clic.

Anche se il luogo di lavoro è molto distante, individuare rapidamente il pezzo giusto è fondamentale per la gestione delle operazioni. Grazie all'assistenza clienti Manitowoc, i componenti di cui avete bisogno sono a portata di telefono o di clic.

No entanto, para uma obra num local remoto, localizar a peça correta rapidamente é vital para gerir as suas operações. Com o Suporte ao Cliente da Manitowoc, as peças de que você precisa estão a apenas um telefonema ou clique.

Насколько бы удаленным ни был производственный участок, быстрое предоставление нужной детали жизненно важно для управления производством. Благодаря службе поддержки клиентов компании Manitowoc, необходимые запчасти можно получить по звонку или щелчку мыши.

### ► Training • Schulungen • Formación • Formation • Formazione • Обучение

Manitowoc Training Centers offer courses for operators and technicians across the globe to provide in depth instruction on crane operation, maintenance and troubleshooting procedures.

Die Manitowoc-Schulungs-Zentren bieten Kranfahrern und Technikern maßgeschneiderte Kurse, weltweit – ob Kranbetrieb, Wartung oder Problemebehebung.

Los centros de formación de Manitowoc ofrecen cursos para operarios y técnicos en todo el mundo, proporcionando una instrucción profunda en cuanto a los procesos de manejo de la grúa, mantenimiento y localización de errores.

Les centres de formation Manitowoc proposent des cours aux opérateurs et aux techniciens du monde entier afin de leurs fournir une formation approfondie sur le fonctionnement, la maintenance et les procédures de dépannage des grues.

I centri di formazione Manitowoc offrono corsi per operatori e tecnici in tutto il mondo per fornire istruzioni approfondite sul funzionamento delle gru, sulla manutenzione e sulle procedure di risoluzione dei problemi.

Os centros de formação da Manitowoc oferecem cursos para operadores e técnicos em todo o mundo, administrando formações detalhadas de operação, manutenção e resolução de avarias das gruas.

Учебные центры Manitowoc предлагают курсы для операторов и технических специалистов по всему миру для углубленного обучения по эксплуатации кранов, техобслуживанию и устранению неисправностей.

## > EnCORE

Manitowoc's EnCORE program maximizes your investment by rebuilding or repairing your crane to extend its life significantly. EnCORE also includes remanufactured parts.

Das EnCORE-Programm von Manitowoc maximiert Ihre Investition mit einer Modernisierung oder Reparatur Ihres Krans, die seine Lebensdauer erheblich verlängern kann. EnCORE umfasst auch wiederaufgearbeitete Teile.

El programa EnCORE de Manitowoc optimiza su inversión mediante la reconstrucción o reparación de grúas para prolongar su vida útil de forma considerable. EnCORE también incluye piezas refabricadas.

Le programme EnCORE de Manitowoc optimise votre investissement en reconstruisant ou en réparant votre grue afin d'en prolonger considérablement la durée de vie. Le programme EnCORE comprend également des pièces remises à neuf.

Il programma EnCORE di Manitowoc massimizza il vostro investimento ricostruendo o riparando la vostra gru per prolungarne significativamente la durata di vita. EnCORE comprende anche componenti rigenerati.

O programa EnCORE da Manitowoc maximiza seu investimento reconstruindo ou reparando a sua grua, prolongando a sua vida útil significativamente. O programa EnCORE também inclui peças recondicionadas.

Программа EnCORE компании Manitowoc максимально увеличивает ваши инвестиции за счет восстановления или ремонта вашего крана для продления его срока службы. Программа EnCORE также включает в себя восстановленные детали.

## > Used cranes • Gebrauchtcrane • Grúas Usadas • Grues d'occasion • Gru usate • Подержанные КРАНЫ

By choosing Manitowoc Used Cranes, you buy a valuable used crane and a brand you can rely on. Manitowoc Used Cranes are ready for several lives and give the highest residual value. High quality cranes for a long-life duration.

Wenn Sie sich für einen Gebrauchtcrane von Manitowoc entscheiden, kaufen Sie einen hochwertigen Gebrauchtcrane und eine Marke, auf die Sie sich verlassen können. Gebrauchtcrane von Manitowoc sind für mehrere Leben gerüstet und bieten den höchsten Restwert.

Al elegir las grúas usadas de Manitowoc, no solo adquiere una valiosa grúa de segunda mano, sino también una marca en la que puede confiar. Las grúas usadas de Manitowoc están preparadas para varias vidas y ofrecen el máximo valor residual.

En choisissant les grues d'occasion Manitowoc, vous achetez une grue d'occasion de grande qualité avec la garantie du constructeur. Les grues d'occasion Manitowoc ont plusieurs vies et offrent une valeur résiduelle élevée.

Scegliendo le gru usate Manitowoc, acquistate una gru usata di valore e un marchio su cui potete fare affidamento. Le gru usate Manitowoc hanno una lunga vita utile e offrono il più alto valore residuo.

Ao escolher gruas usadas da Manitowoc, você compra uma grua usada valiosa e uma marca na qual pode confiar. As gruas usadas da Manitowoc estão prontas para várias vidas e oferecem o maior valor residual. Gruas de alta qualidade para uma longa vida útil.

Выбирая подержанные краны Manitowoc, вы покупаете ценные подержанные краны и бренд, на который вы можете положиться. Подержанные краны Manitowoc готовы к нескольким срокам службы и дают наибольшую остаточную стоимость.



Financial tools that help you capitalize on opportunity with solutions that fit your needs.

Individuelle Finanzierungslösungen, mit unseren Kooperationspartnern entwickelt, um Ihre bereits bestehenden Finanzierungsstrukturen zu ergänzen.

Des outils financiers qui vous aident à investir à bon escient grâce à des solutions adaptées à vos besoins.

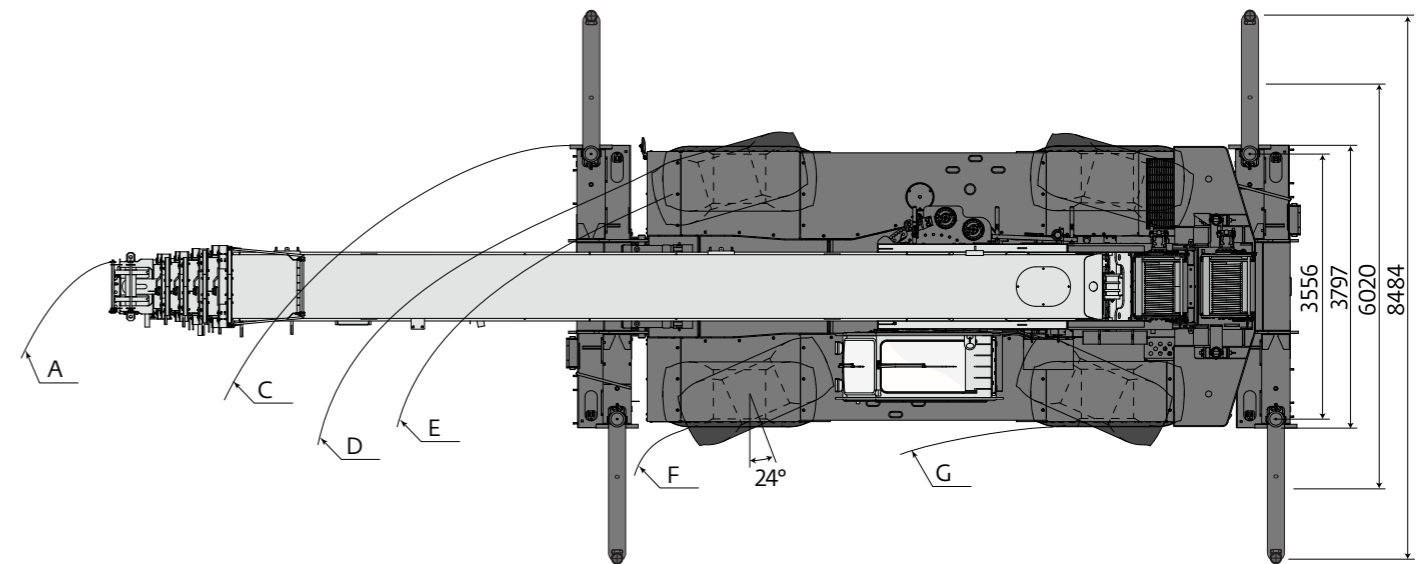
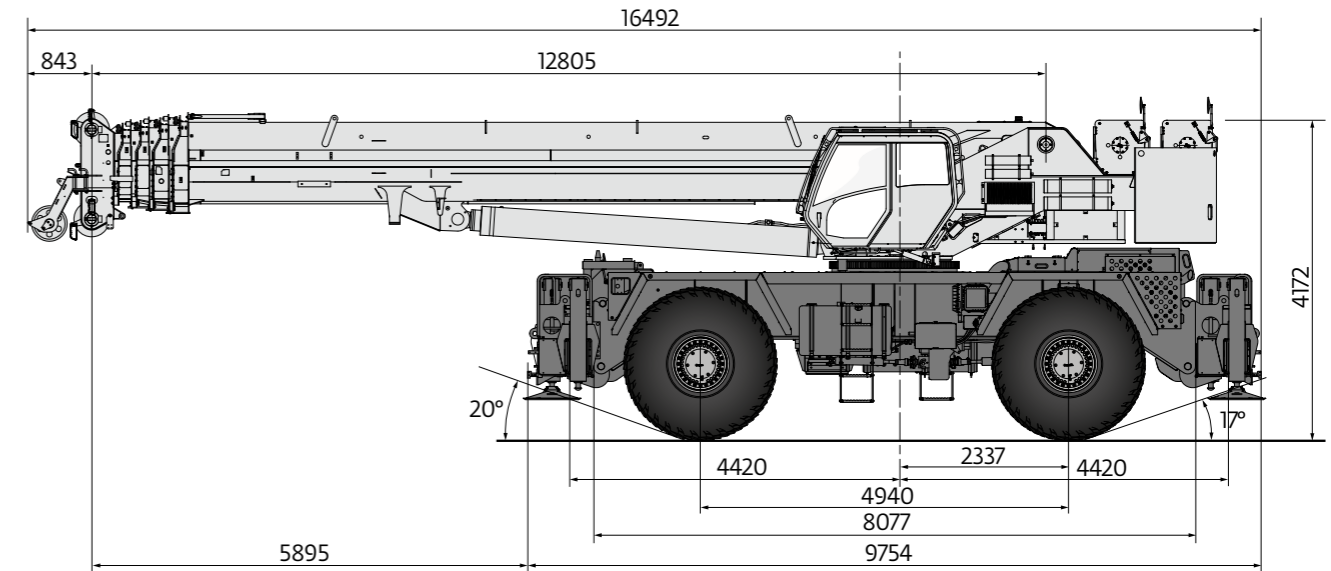
Herramientas financieras que le ayudan a sacar provecho de las oportunidades, con soluciones que se ajustan a sus necesidades.

Strumenti finanziari che consentono di capitalizzare le opportunità con soluzioni che si adattano alle vostre esigenze.

Ferramentas financeiras que o ajudam a capitalizar oportunidades com soluções que respondem às suas necessidades.

Финансовые инструменты, позволяющие вам развивать бизнес, опираясь на решения, отвечающие вашим потребностям.

Dimensions • Abmessungen • Encombrement • Dimensiones • Dimensioni • Dimensões • Размеры	7
Data • Daten • Caractéristiques • Datos • Dati • Características • Данные	8
Load charts • Traglasten • Capacités de levage • Capacidades • Capacità • Diagramas de carga Таблицы грузоподъемности	
Working range • Arbeitsbereiche • Diagramme de levage • Gama de trabajo • Area di lavoro Intervalo de funcionamento • Грузовысотные характеристики	10
Telescopic boom • Teleskopausleger • Flèche principale • Pluma telescópica • Braccio telescopico Lança telescópica • Телескопическая стрела	11
Swingaway • Klappspitze • Extension treillis • Plumín • Jib • Extensões- Jib Откидной удлинитель стрелы	15
Weight reductions • Gewichte der Lastaufnahmemittel • Reductions de charge Reducciones de peso • Riduzioni di peso • Reduções de peso • Снижение веса	18
Specification	19
Technische Daten	20
Caractéristiques techniques	21
Características	22
Caratteristiche tecniche	23
Características técnicas	24
Технические характеристики	25
Load charts • Traglasten • Capacités de levage • Capacidades • Capacità • Diagramas de carga Таблицы грузоподъемности	26
Symbols • Symbolerklärung • Glossaire des symboles • Glosario de símbolos Glossario dei simboli • Símbolos Символы	27



Tire size	A	C	D	E	F	G	A	B	C	D	E	F	G
33,25 x 29	18237	15748	14884	14453	11709	10236	13970	14453	10973	10135	9652	6909	5918
	2 wheel steer						4 wheel steer						

Note: Reference dimensions in mm. • Hinweis: Bezugsmaße in mm. • Remarque: Cotes de référence en mm. • Nota: Dimensiones de referencia en mm. • Nota: Dimensioni di riferimento in mm. • Nota: Dimensões de referência em mm. • Примечание: Справочные размеры (в мм).



Axle Achse Essieu Eje Asse Еixo Оси	Total weight Gesamtgewicht Poids total Peso total Peso totale Peso total Суммарный вес	Front Vorne Avant Delantero Anteriore Dianteiro Передняя	Rear Hinten Arrière Trasero Posteriore Traseiro Задняя
	kg	kg	kg
Basic machine (Tier3): includes 48,8 m main boom, main hoist with 290 m of wire rope and auxiliary hoist with 214 m of wire rope, manual offsettable bifold swingaway, full counterweight, 9 t hook block • Grundauführung (Tier3): umfasst einen 48,8 m langen Hauptausleger, ein Haupthubwerk mit einem 290 m langen Drahtseil und ein Hilfshubwerk mit einem 214 m langen Drahtseil, mechanisch verstellbare Doppelklappsitze, volles Gegengewicht, 9t Kugelhaken, 82t Hakenflasche • Machine de base (Tier3): comporte une flèche principale de 48,8 m, un treuil principal avec 290 m de câble et un treuil auxiliaire avec 214 m de câble, une extension treillis double manuelle, un contrepoids complet, une boule de démolition de 9 t et un moufle à crochet de 82 t • Máquina básica (Tier3): incluye pluma principal de 48,8 m, cabrestante principal con 290 m de cable y cabrestante auxiliar con 214 m de cable, plumín articulado en dos secciones, angulable manualmente, contrapeso completo, gancho de bola de 9 t, gancho de 82 t • Macchina base (Tier3) comprensiva di braccio principale da 48,8 m, argano principale con 290 m di fune metallica, argano ausiliario con 214 m di fune metallica, jib ripieghevole inclinabile manualmente, contrappeso completo, bozzello a palla da 9 t e bozzello da 82 t • Máquina base (Tier3): inclui: lança principal de 48,8 m, guincho principal com 290 m de cabo, guincho auxiliar com 214 m de cabo, extensão dupla articulada(jib), manual, contrapeso completo, gancho de bola de 9 t e gancho de 82 t • Основная машина (Tier3): включает 48,8 м основной стрелы, основную лебедку с 290 м троса и вспомогательную лебедку с 214 м троса, ручной смещаемый двухсекционный вывод, полный противовес, 82-тонный крюкблок и 9-тонную шаровую бабу.	79460	36275	43186
Sub: Hydraulic offsettable bifold swingaway • Zusatz: Hydraulisch verstellbare Doppelklappsitze • Sub: Extension treillis double hydraulique • Con: plumín articulado en dos secciones, angulable hidráulicamente • Sub: jib ripieghevole inclinabile idraulicamente • Com: Extensão dupla articulada(jib), hidráulica • Подэлемент: гидравлический смещаемый двухсекционный вывод	79736	36906	42830
Remove counterweight, aux. hoist and bifold swingaway • Gegengewicht, Hilfshubwerk und Doppelklappsitze abgebaut • Retirer le contrepoids, le treuil auxiliaire et l'extension treillis double • Retirando contrapeso, cabrestante auxiliar y plumín plegable • Rimuovere il contrappeso, l'argano ausiliario e il jib ripieghevole • Remover o contrapeso, o guincho auxiliar e a extensão dupla articulada(jib) • Без противовеса, всп. лебедки и складного удлинителя стрелы	58015	39801	18214
Remove counterweight, aux. hoist and bifold swingaway, 72,5 t hook block, 9 t hook block, and both outriggers boxes/beams • Gegengewicht, Hilfshubwerk und Doppelklappsitze, 72,5t Hakenflasche, 9t Kugelhaken und beide Abstützträger abgebaut • Retirer le contrepoids, le treuil aux. et l'extension treillis double, le moufle à crochet de 72,5 t, la boule de démolition de 9 t et les deux boîtiers/poutres de calage • Retirar el contrapeso, cabrestante auxiliar y el plumín articulado en dos secciones, el bloque de gancho de 72,5 t, la bola de servicio de 9 t, y las dos cajas estabilizadoras/vigas • Rimuovere contrappeso, argano ausiliario, jib ripieghevole, bozzello da 72,5 t, bozzello a palla da 9 t ed entrambe le casse degli stabilizzatori • Remover o contrapeso, o guincho auxiliar, a extensão dupla articulada(jib), o gancho de 72,5 t, o gancho de bola de 9 t e ambas as caixas dos estabilizadores • Снимите противовес, вспомогательную лебедку и двухсекционный вывод, 72,5-тонный крюкблок, 9-тонную шаровую бабу и обе лапы домкратов/балки опоры	48403	34535	13867
Remove counterweight, aux. hoist and bifold swingaway, 72,5 t hook block, 9 t hook block, both outriggers boxes/beams and boom assembly • Gegengewicht, Hilfshubwerk und Doppelklappsitze, 72,5t Hakenflasche, 9t Kugelhaken, beide Abstützträger und Ausleger abgebaut • Retirer le contrepoids, le treuil aux. et l'extension treillis double, le moufle à crochet de 72,5 t, la boule de démolition de 9 t, les deux boîtiers/poutres de calage et l'assemblage de flèche • Retirar el contrapeso, el cabrestante auxiliar y el plumín articulado en dos secciones, el bloque de gancho de 72,5 t, la bola de servicio de 9 t, las dos cajas estabilizadoras/vigas y el conjunto de la pluma • Rimuovere contrappeso, argano ausiliario, jib ripieghevole, bozzello da 72,5 t, bozzello a palla da 9 t, entrambe le casse degli stabilizzatori e il braccio completo • Remover o contrapeso, o guincho auxiliar, a extensão dupla articulada(jib), o gancho de 72,5 t, o gancho de bola de 9 t e ambas as caixas dos estabilizadores e a estrutura da lança • Снимите противовес, вспомогательную лебедку и двухсекционный вывод, 72,5-тонный крюкблок, 9-тонную шаровую бабу и обе лапы домкратов/балки опоры и блок стрелы	33202	14191	19011
Remove counterweight, aux. hoist and bifold swingaway, 72,5 t hook block, 9 t hook block, both outriggers boxes/beams, boom assembly and all tire/wheels • Gegengewicht, Hilfshubwerk und Doppelklappsitze, 72,5t Hakenflasche, 9t Kugelhaken, beide Abstützträger, Ausleger und alle Reifen/Räder abgebaut • Retirer le contrepoids, le treuil aux. et l'extension treillis double, le moufle à crochet de 72,5 t, la boule de démolition de 9 t, les deux boîtiers/poutres de calage, l'assemblage de flèche et les roues et pneus • Retirar el contrapeso, el cabrestante auxiliar y el plumín articulado en dos secciones, el bloque de gancho de 72,5 t, la bola de servicio de 9 t, las dos cajas estabilizadoras/vigas, el conjunto de la pluma y todas las unidades de neumático/rueda • Rimuovere contrappeso, argano ausiliario, jib ripieghevole, bozzello da 72,5 t, bozzello a palla da 9 t, entrambe le casse degli stabilizzatori, braccio completo e tutte le ruote • Remover o contrapeso, guincho auxiliar, a extensão dupla articulada(jib), o bloco do gancho 72,5 t, a estrutura da lança e todas as rodas/pneus • Снимите противовес, вспомогательную лебедку и двухсекционный вывод, 72,5-тонный крюкблок, 9-тонную шаровую бабу и обе лапы домкратов/балки опоры, блок стрелы и все шины/колеса	28883	12032	16852



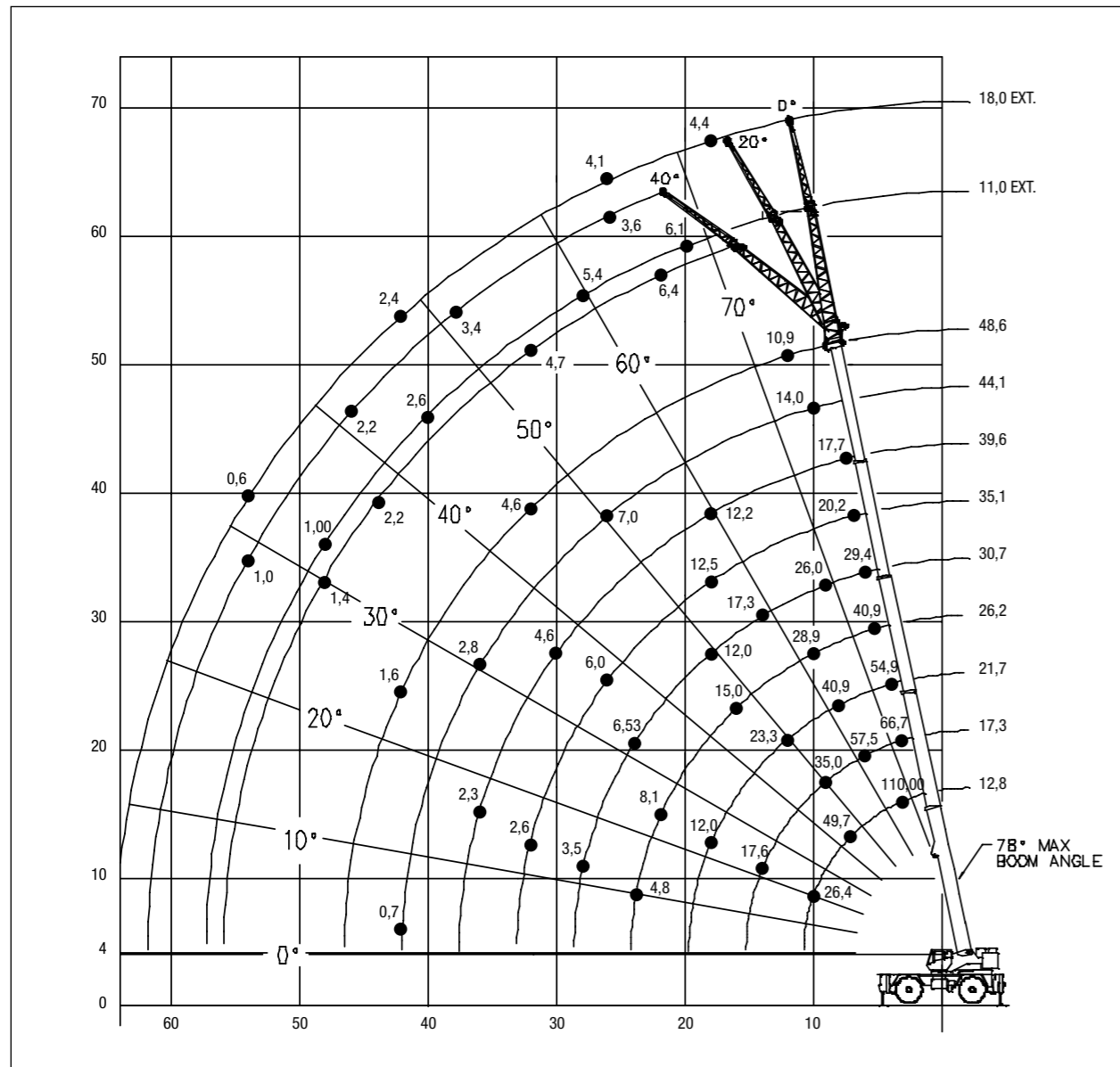
Lifting Capacity Traglast Force de levage Capacità di sollevamento Capacidade de elevação Грузоподъемность	Sheaves Rollen Pouliés Poleas Carrucole Roldanas Шкивы	Parts of line Stränge Brins Ramales de cable Numero di funi Partes de cabo Кратность запасовки	Total weight Gesamtgewicht Poids total Peso total Peso totale Peso total Суммарный вес
120 t	8	2 to 16	1089 kg
9 t	H/B (swivel)	1	308 kg



	Infinitely variable Stufenlos verstellbar Progressivement variable Infinitamente variable Infinitamente variabile Infinitamente variável Плавно-изменяемый	Rope Seil Câble Cable Fune Cabo Канат	Permissible line pull max. Max. Seilzug Effort maxi au brin Tracciones del cable admisibles Tiro massimo Esforço máx. admissível no cabo Максимально допустимое натяжение каната	Nominal cable length Seillänge (Nennwert) Longueur nominale des cables Longitud nominal del cable Lunghezza nominale cavo Comprimento nominal de cabo Номинальная длина каната
0-171 m/min	single line • bei einfachem Strang brin simple • ramal simple tiro a fune singola • cabo singelo Однократная запасовка	19 mm (18x19 class)	7620 kg	213 m
0-171 m/min	single line • bei einfachem Strang brin simple • ramal simple tiro a fune singola • cabo singelo Однократная запасовка	19 mm (6x37 class)	7620 kg	290 m
0-2,5 min <sup>-1</sup>				
20° 70°	approx. 55 s • ca. 55 s • env. 55 s aproximadamente 55 s • circa 55 s cerca de 55 s • примерно 55 с			
12,8 to 48,8 m	approx. 232 s • ca. 232 s • env. 232 s aproximadamente 232 s • circa 232 s cerca de 232 s • примерно 232 с			

Load charts • Traglasten • Capacités de levage • Capacidades Caracità • Diagramas de carga • Таблицы грузоподъемности

Working range • Arbeitsbereiche • Diagramme de levage • Gama de trabajo • Area di lavoro  
Intervalo de funcionamento • Грузовысотные характеристики



	H (mm)
	(t)
	3353

Load charts • Traglasten • Capacités de levage • Capacidades Caracità • Diagramas de carga • Таблицы грузоподъемности

Telescopic boom • Teleskopausleger • Flèche principale • Pluma telescópica • Braccio telescopico  
Lança telescópica • Телескопическая стрела

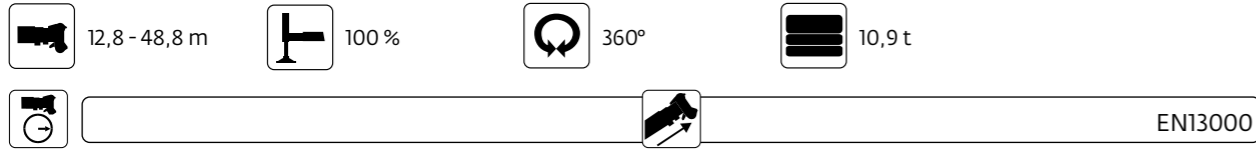


m	12,8	17,3	21,7	26,2	30,7	35,1	39,6	44,1	48,8	m
3,0	110,000	66,675	-	-	-	-	-	-	-	3,0
3,5	104,500	66,675	-	-	-	-	-	-	-	3,5
4,0	92,900	66,675	54,900	-	-	-	-	-	-	4,0
4,5	81,525	66,675	54,200	-	-	-	-	-	-	4,5
5,0	72,975	63,925	53,500	40,900	-	-	-	-	-	5,0
6,0	59,200	57,525	52,175	39,425	29,450	-	-	-	-	6,0
7,0	49,700	48,850	46,950	37,200	28,725	20,225	-	-	-	7,0
8,0	41,825	41,025	40,925	34,600	27,750	20,225	-	-	-	8,0
9,0	35,750	35,000	34,900	31,500	26,000	20,225	17,750	-	-	9,0
10,0	26,400	30,475	30,375	28,925	24,025	20,225	17,400	14,000	-	10,0
12,0	-	23,400	23,350	23,475	20,300	18,950	16,675	13,525	10,950	12,0
14,0	-	17,600	18,450	18,650	17,300	16,625	15,250	13,050	10,625	14,0
16,0	-	-	14,825	15,050	14,675	14,375	13,725	12,475	10,150	16,0
18,0	-	-	11,975	12,200	12,075	12,475	12,175	11,375	9,780	18,0
20,0	-	-	-	9,980	9,865	10,625	10,675	10,275	9,380	20,0
22,0	-	-	-	8,155	8,050	8,900	9,330	9,090	8,370	22,0
24,0	-	-	-	4,815	6,530	7,395	7,930	7,970	7,340	24,0
26,0	-	-	-	-	5,230	6,095	6,750	6,985	6,450	26,0
28,0	-	-	-	-	3,475	4,875	5,660	6,025	5,780	28,0
30,0	-	-	-	-	-	3,845	4,620	5,120	5,275	30,0
32,0	-	-	-	-	-	2,585	3,730	4,235	4,630	32,0
34,0	-	-	-	-	-	-	2,955	3,455	3,935	34,0
36,0	-	-	-	-	-	-	2,280	2,775	3,260	36,0
38,0	-	-	-	-	-	-	-	2,175	2,655	38,0
40,0	-	-	-	-	-	-	-	1,645	2,120	40,0
42,0	-	-	-	-	-	-	-	0,690	1,640	42,0



m	12,8	17,3	21,7	26,2	30,7	35,1	39,6	44,1	48,8	m
3,0	120,000	66,675	-	-	-	-	-	-	-	3,0
3,5	105,750	66,675	-	-	-	-	-	-	-	3,5
4,0	92,900	66,675	57,600	-	-	-	-	-	-	4,0
4,5	81,525	66,675	57,600	-	-	-	-	-	-	4,5
5,0	72,975	63,925	56,125	42,000	-	-	-	-	-	5,0
6,0	59,200	57,525	52,700	39,425	29,475	-	-	-	-	6,0
7,0	49,700	48,850	46,950	37,200	28,850	20,225	-	-	-	7,0
8,0	41,825	41,025	40,925	34,600	27,750	20,225	-	-	-	8,0
9,0	35,750	35,000	34,900	31,500	26,000	20,225	19,575	-	-	9,0
10,0	26,400	30,475	30,375	28,925	24,025	20,225	19,325	14,750	-	10,0
12,0	-	23,400	23,350	23,475	20,300	18,950	17,475	14,750	11,375	12,0
14,0	-	17,600	18,450	18,650	17,300	16,625	15,250	14,500	11,200	14,0
16,0	-	-	14,825	15,050	14,675	14,375	13,725	12,750	11,000	16,0
18,0	-	-	11,975	12,200	12,075	12,475	12,175	11,375	10,575	18,0
20,0	-	-	-	9,980	9,865	10,625	10,675	10,275	9,460	20,0
22,0	-	-	-	8,155	8,050	8,900	9,330	9,090	8,370	22,0
24,0	-	-	-	4,815	6,530	7,395	7,930	7,970	7,340	24,0
26,0	-	-	-	-	5,230	6,095	6,750	6,985	6,450	26,0
28,0	-	-	-	-	3,475	5,020	5,660	6,025	5,780	28,0
30,0	-	-	-	-	-	4,065	4,720	5,165	5,275	30,0
32,0	-	-	-	-	-	2,585	3,915	4,415	4,630	32,0
34,0	-	-	-	-	-	-	3,165	3,680	3,960	34,0
36,0	-	-	-	-	-	-	2,510	3,035	3,415	36,0
38,0	-	-	-	-	-	-	-	2,455	2,870	38,0
40,0	-	-	-	-	-	-	-	1,800	2,335	40,0
42,0	-	-	-	-	-	-	-	0,690	1,865	42,0

Telescopic boom • Teleskopausleger • Flèche principale • Pluma telescópica • Braccio telescopico  
 Lança telescópica • Телескопическая стрела

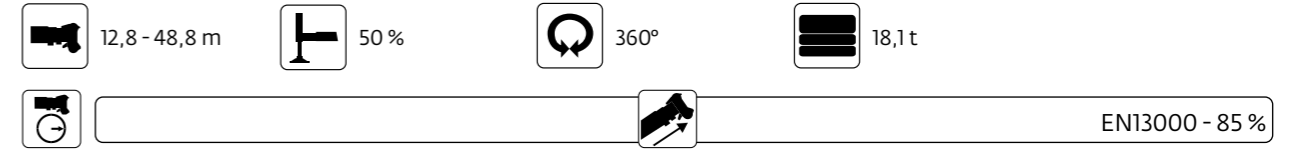


m	12,8	17,3	21,7	26,2	30,7	35,1	39,6	44,1	48,8	m
3,0	110,000	66,675	-	-	-	-	-	-	-	3,0
3,5	99,050	66,675	-	-	-	-	-	-	-	3,5
4,0	86,675	66,675	54,900	-	-	-	-	-	-	4,0
4,5	75,975	66,675	54,200	-	-	-	-	-	-	4,5
5,0	68,000	62,650	53,500	40,900	-	-	-	-	-	5,0
6,0	54,625	53,225	52,175	39,425	29,450	-	-	-	-	6,0
7,0	45,575	44,725	44,650	37,200	28,725	20,225	-	-	-	7,0
8,0	38,125	37,350	37,225	34,600	27,750	20,225	-	-	-	8,0
9,0	32,475	31,750	31,650	31,475	26,000	20,225	17,750	-	-	9,0
10,0	24,875	27,550	27,475	27,650	24,025	20,225	17,400	14,000	-	10,0
12,0	-	21,000	20,950	21,125	20,300	18,950	16,675	13,525	10,950	12,0
14,0	-	15,900	16,400	16,600	16,475	16,625	15,250	13,050	10,625	14,0
16,0	-	-	12,925	12,925	12,875	13,725	13,725	12,475	10,150	16,0
18,0	-	-	9,850	9,900	9,800	10,675	11,400	11,375	9,780	18,0
20,0	-	-	-	7,575	7,495	8,350	9,190	9,630	9,380	20,0
22,0	-	-	-	5,765	5,700	6,540	7,355	7,855	8,200	22,0
24,0	-	-	-	4,325	4,235	5,095	5,895	6,380	6,725	24,0
26,0	-	-	-	-	3,045	3,900	4,700	5,175	5,520	26,0
28,0	-	-	-	-	2,050	2,895	3,710	4,175	4,520	28,0
30,0	-	-	-	-	-	2,045	2,850	3,325	3,670	30,0
32,0	-	-	-	-	-	1,315	2,110	2,600	2,950	32,0
34,0	-	-	-	-	-	-	1,475	1,955	2,320	34,0
36,0	-	-	-	-	-	-	0,915	1,390	1,765	36,0
38,0	-	-	-	-	-	-	-	0,895	1,270	38,0
40,0	-	-	-	-	-	-	-	-	0,830	40,0



m	12,8	17,3	21,7	26,2	30,7	35,1	39,6	44,1	48,8	m
3,0	115,000	66,675	-	-	-	-	-	-	-	3,0
3,5	99,050	66,675	-	-	-	-	-	-	-	3,5
4,0	86,675	66,675	57,600	-	-	-	-	-	-	4,0
4,5	75,975	66,675	57,600	-	-	-	-	-	-	4,5
5,0	68,000	62,650	56,125	42,000	-	-	-	-	-	5,0
6,0	54,625	53,225	52,700	39,425	29,475	-	-	-	-	6,0
7,0	45,575	44,725	44,650	37,200	28,850	20,225	-	-	-	7,0
8,0	38,125	37,350	37,225	34,600	27,750	20,225	-	-	-	8,0
9,0	32,475	31,750	31,650	31,475	26,000	20,225	19,575	-	-	9,0
10,0	24,875	27,550	27,475	27,650	24,025	20,225	19,325	14,750	-	10,0
12,0	-	21,000	20,950	21,125	20,300	18,950	17,475	14,750	11,375	12,0
14,0	-	15,900	16,400	16,600	16,475	16,625	15,250	14,500	11,200	14,0
16,0	-	-	13,050	13,250	13,125	14,000	13,725	12,750	11,000	16,0
18,0	-	-	10,400	10,625	10,500	11,350	11,975	11,375	10,575	18,0
20,0	-	-	-	8,540	8,430	9,290	9,950	10,250	9,460	20,0
22,0	-	-	-	6,855	6,750	7,615	8,270	8,795	8,370	22,0
24,0	-	-	-	4,645	5,305	6,150	6,855	7,375	7,340	24,0
26,0	-	-	-	-	4,035	4,880	5,665	6,150	6,445	26,0
28,0	-	-	-	-	2,920	3,810	4,630	5,085	5,415	28,0
30,0	-	-	-	-	-	2,910	3,720	4,185	4,520	30,0
32,0	-	-	-	-	-	-	2,135	2,935	3,410	32,0
34,0	-	-	-	-	-	-	-	2,255	2,725	34,0
36,0	-	-	-	-	-	-	-	1,665	2,130	36,0
38,0	-	-	-	-	-	-	-	-	1,600	38,0
40,0	-	-	-	-	-	-	-	-	1,130	40,0
42,0	-	-	-	-	-	-	-	-	0,670	42,0

Telescopic boom • Teleskopausleger • Flèche principale • Pluma telescópica • Braccio telescopico  
 Lança telescópica • Телескопическая стрела



m	12,8	17,3	21,7	26,2	30,7	35,1	39,6	44,1	48,8	m
3,0	109,500	66,675	-	-	-	-	-	-	-	3,0
3,5	100,750	66,675	-	-	-	-	-	-	-	3,5
4,0	91,025	66,675	57,600	-	-	-	-	-	-	4,0
4,5	81,100	66,675	57,600	-	-	-	-	-	-	4,5
5,0	72,975	63,925	56,125	41,225	-	-	-	-	-	5,0
6,0	59,200	56,825	51,675	39,425	29,475	-	-	-	-	6,0
7,0	49,700	44,925	41,250	37,200	28,850	20,225	-	-	-	7,0
8,0	39,650	36,700	33,875	31,950	27,750	20,225	-	-	-	8,0
9,0	31,975	30,625	28,425	26,925	25,225	20,225	19,575	-	-	9,0
10,0	26,400	25,075	24,200	23,025	21,600	20,225	19,325	14,750	-	10,0
12,0	-	17,675	17,450	17,300	16,250	16,475	16,525	14,750	11,375	12,0
14,0	-	12,975	12,700	13,225	12,500	12,900	13,075	13,175	11,200	14,0
16,0	-	-	9,440	9,865	9,740	10,200	10,500	10,675	10,750	16,0
18,0	-	-	7,040	7,380	7,365	8,110	8,495	8,725	8,865	18,0
20,0	-	-	-	5,475	5,445	6,210	6,885	7,155	7,340	20,0
22,0	-	-	-	3,975	3,930	4,685	5,405	5,870	6,085	22,0
24,0	-	-	-	2,760	2,705	3,450	4,165	4,665	5,030	24,0
26,0	-	-	-	-	1,695	2,430	3,140	3,640	4,115	26,0
28,0	-	-	-	-	0,840	1,570	2,275	2,770	3,255	28,0
30,0	-	-	-	-	-	0,840	1,540	2,030	2,510	30,0
32,0	-	-	-	-	-	-	0,905	1,395	1,865	32,0
34,0	-	-	-	-	-	-	-	0,835	1,305	34,0
36,0	-	-	-	-	-	-	-	-	0,815	36,0



m	12,8	17,3	21,7	28,2	30,7	35,1	39,6	44,1	48,6	m
3,0	107,500	66,675	-	-	-	-	-	-	-	3,0
3,5	98,125	66,675	-	-	-	-	-	-	-	3,5
4,0	86,675	66,675	57,600	-	-	-	-	-	-	4,0
4,5	75,975	66,675	57,600	-	-	-	-	-	-	4,5
5,0	68,000	61,775	55,025	41,225	-	-	-	-	-	5,0
6,0	52,875	46,050	41,700	38,550	29,475	-	-	-	-	6,0
7,0	41,100	36,100	32,975	30,800	28,475	20,225	-	-	-	7,0
8,0	31,575	29,225	26,825	25,225	23,425	20,225	-	-	-	8,0
9,0	25,000	24,175	22,250	21,025	19,575	19,550	19,350	-	-	9,0
10,0	20,300	19,500	18,725	17,750	16,550	16,650	16,650	14,750	-	10,0
12,0	-	13,275	13,100	12,975	12,075	12,425	12,600	12,650	11,375	12,0
14,0	-	9,325	9,165	9,550	8,945	9,420	9,710	9,870	9,940	14,0
16,0	-	-	6,435	6,770	6,625	7,175	7,535	7,770	7,910	16,0
18,0	-	-	4,435	4,720	4,665	5,435	5,845	6,130	6,320	18,0
20,0	-	-	-	3,155	3,090	3,885	4,495	4,810	5,035	20,0
22,0	-	-	-	1,915	1,845	2,630	3,380	3,730	3,980	22,0
24,0	-	-	-	0,915	0,840	1,610	2,355	2,775	3,095	24,0
26,0	-	-	-	-	-	0,770	1,505	1,940	2,340	26,0
28,0	-	-	-	-	-	-	0,795	1,230	1,655	28,0
30,0	-	-	-	-	-	-	-	0,625	1,050	30,0
32,0	-	-	-	-	-	-	-	-	0,530	32,0

Load charts • Traglasten • Capacités de levage • Capacidades  
 Caracità • Diagramas de carga • Таблицы грузоподъемности

Telescopic boom • Teleskopausleger • Flèche principale • Pluma telescópica • Braccio telescopico  
 Lança telescópica • Телескопическая стрела

12,8 - 26,2 m   
 0 km/h   
 360°   
 10,9 t

EN13000

m	12,8	17,3	21,7	26,2	m
3,0	28,000	-	-	-	3,0
3,5	28,000	-	-	-	3,5
4,0	25,600	-	-	-	4,0
4,5	22,600	-	-	-	4,5
5,0	20,075	15,675	-	-	5,0
6,0	15,950	15,425	10,300	8,255	6,0
7,0	11,800	11,625	10,300	8,255	7,0
8,0	8,910	8,840	7,880	7,850	8,0
9,0	6,760	6,700	5,690	6,130	9,0
10,0	5,105	5,005	4,100	4,720	10,0
12,0	-	2,495	1,935	2,560	12,0

85 %

m	12,8	17,3	21,7	26,2	m
3,0	28,000	-	-	-	3,0
3,5	28,000	-	-	-	3,5
4,0	25,600	-	-	-	4,0
4,5	22,600	-	-	-	4,5
5,0	20,075	15,675	-	-	5,0
6,0	16,075	15,675	10,300	8,255	6,0
7,0	13,050	13,075	10,300	8,255	7,0
8,0	10,650	10,375	9,420	7,860	8,0
9,0	8,355	8,025	7,235	6,940	9,0
10,0	6,470	6,130	5,435	5,615	10,0
12,0	-	2,990	2,935	2,975	12,0

12,8 - 26,2 m   
 4 km/h   
 0°   
 18,1 t

EN13000 - 85 %

m	12,8	17,3	21,7	26,2	m
3,0	28,000	-	-	-	3,0
3,5	28,000	-	-	-	3,5
4,0	25,600	-	-	-	4,0
4,5	22,675	15,675	-	-	4,5
5,0	20,300	15,675	-	-	5,0
6,0	16,150	15,675	-	-	6,0
7,0	15,750	15,675	-	-	7,0
8,0	15,125	14,925	-	-	8,0
9,0	13,475	13,050	12,000	-	9,0
10,0	11,700	11,200	11,275	-	10,0
12,0	-	8,295	8,320	8,985	12,0
14,0	-	6,090	6,055	6,600	14,0
16,0	-	-	4,280	4,710	16,0
18,0	-	-	2,850	3,190	18,0
20,0	-	-	-	1,940	20,0
22,0	-	-	-	0,900	22,0

Load charts • Traglasten • Capacités de levage • Capacidades  
 Caracità • Diagramas de carga • Таблицы грузоподъемности

Swingaway • Klappspitze • Extension treillis • Plumín • Falcone • Jib • Складной удлинитель стрелы

12,8 - 48,8 m   
 11,0 - 33,8 m   
 100 %   
 360°   
 18,1 t

EN13000

m	11,0 m			18,0 m			m
	0°	20°	40°	0°	20°	40°	
14,0	6,520	-	-	-	-	-	14,0
16,0	6,380	-	-	4,360	-	-	16,0
18,0	6,240	6,425	-	4,360	-	-	18,0
20,0	6,105	6,285	6,560	4,295	-	-	20,0
22,0	5,970	6,150	6,430	4,235	-	-	22,0
24,0	5,830	6,015	6,175	4,170	4,290	-	24,0
26,0	5,640	5,830	5,810	4,110	4,190	3,635	26,0
28,0	5,445	5,500	5,460	4,045	4,090	3,580	28,0
30,0	4,980	5,155	5,150	3,960	4,000	3,530	30,0
32,0	4,405	4,650	4,735	3,855	3,910	3,485	32,0
34,0	3,870	4,105	4,270	3,750	3,830	3,445	34,0
36,0	3,405	3,625	3,775	3,470	3,655	3,410	36,0
38,0	2,985	3,195	3,330	3,065	3,355	3,380	38,0
40,0	2,600	2,795	2,915	2,690	3,020	3,195	40,0
42,0	2,170	2,435	2,540	2,355	2,665	2,865	42,0
44,0	1,745	2,070	2,195	2,050	2,340	2,535	44,0
46,0	1,355	1,645	1,805	1,770	2,035	2,210	46,0
48,0	1,005	1,260	1,410	1,500	1,765	1,915	48,0
50,0	0,685	0,910	-	1,160	1,505	1,630	50,0
52,0	-	0,585	-	0,845	1,245	1,355	52,0
54,0	-	-	-	0,555	0,925	1,000	54,0
56,0	-	-	-	-	0,625	-	56,0

m	25,9 m			33,8 m			m
	0°	20°	40°	0°	20°	40°	
18,0	2,870	-	-	-	-	-	18,0
20,0	2,870	-	-	-	-	-	20,0
22,0	2,820	-	-	1,540	-	-	22,0
24,0	2,770	2,995	-	1,540	-	-	24,0
26,0	2,720	2,945	-	1,535	-	-	26,0
28,0	2,670	2,895	2,900	1,495	1,655	-	28,0
30,0	2,620	2,845	2,900	1,455	1,610	-	30,0
32,0	2,560	2,780	2,900	1,415	1,570	1,705	32,0
34,0	2,500	2,720	2,890	1,375	1,530	1,675	34,0
36,0	2,440	2,660	2,840	1,335	1,485	1,650	36,0
38,0	2,380	2,600	2,705	1,300	1,445	1,620	38,0
40,0	2,315	2,540	2,550	1,260	1,405	1,595	40,0
42,0	2,095	2,410	2,405	1,210	1,360	1,565	42,0
44,0	1,795	2,135	2,240	1,160	1,320	1,540	44,0
46,0	1,515	1,835	2,055	1,110	1,280	1,510	46,0
48,0	1,265	1,565	1,770	1,025	1,235	1,480	48,0
50,0	1,035	1,315	1,495	0,800	1,125	1,305	50,0
52,0	0,815	1,075	1,235	-	0,890	1,095	52,0
54,0	0,620	0,860	1,000	-	-	0,865	54,0
56,0	-	0,660	0,775	-	-	-	56,0



Load charts • Traglasten • Capacités de levage • Capacidades  
 Carapità • Diagramas de carga • Таблицы грузоподъемности

Swingaway • Klappspitze • Extension treillis • Plumín • Falcone • Jib • Складной удлинитель стрелы



m	11,0 m			18,0 m			m
	0°	20°	40°	0°	20°	40°	
14,0	7,255	-	-	-	-	-	14,0
16,0	7,235	-	-	4,580	-	-	16,0
18,0	7,190	7,120	-	4,580	-	-	18,0
20,0	7,160	7,080	6,865	4,580	-	-	20,0
22,0	6,985	6,665	6,560	4,580	4,555	-	22,0
24,0	6,525	6,245	6,175	4,580	4,555	-	24,0
26,0	6,080	5,855	5,810	4,580	4,550	3,895	26,0
28,0	5,620	5,500	5,460	4,580	4,445	3,835	28,0
30,0	4,980	5,155	5,150	4,460	4,315	3,780	30,0
32,0	4,405	4,650	4,735	4,210	4,105	3,730	32,0
34,0	3,870	4,105	4,270	3,910	3,870	3,660	34,0
36,0	3,405	3,625	3,775	3,470	3,655	3,530	36,0
38,0	2,985	3,195	3,330	3,065	3,355	3,385	38,0
40,0	2,600	2,795	2,915	2,690	3,020	3,195	40,0
42,0	2,260	2,435	2,540	2,355	2,665	2,865	42,0
44,0	1,930	2,110	2,195	2,050	2,340	2,535	44,0
46,0	1,605	1,795	1,865	1,770	2,035	2,210	46,0
48,0	1,260	1,460	1,500	1,515	1,765	1,915	48,0
50,0	0,940	1,125	-	1,265	1,505	1,630	50,0
52,0	0,600	0,600	-	1,015	1,260	1,365	52,0
54,0	-	-	-	0,745	1,015	1,115	54,0
56,0	-	-	-	-	0,745	-	56,0

m	25,9 m			33,8 m			m
	0°	20°	40°	0°	20°	40°	
18,0	3,205	-	-	-	-	-	18,0
20,0	3,205	-	-	-	-	-	20,0
22,0	3,205	-	-	1,995	-	-	22,0
24,0	3,205	2,995	-	1,995	-	-	24,0
26,0	3,205	2,995	-	1,995	-	-	26,0
28,0	3,205	2,995	2,900	1,995	1,915	-	28,0
30,0	3,205	2,995	2,900	1,995	1,915	-	30,0
32,0	3,205	2,995	2,900	1,995	1,915	1,810	32,0
34,0	3,160	2,985	2,890	1,995	1,915	1,810	34,0
36,0	2,960	2,950	2,840	1,995	1,915	1,810	36,0
38,0	2,705	2,805	2,705	1,995	1,915	1,810	38,0
40,0	2,420	2,615	2,550	1,960	1,915	1,810	40,0
42,0	2,095	2,410	2,405	1,790	1,890	1,810	42,0
44,0	1,795	2,135	2,240	1,545	1,775	1,725	44,0
46,0	1,515	1,835	2,055	1,270	1,600	1,600	46,0
48,0	1,265	1,565	1,770	1,025	1,360	1,480	48,0
50,0	1,035	1,315	1,495	0,800	1,125	1,305	50,0
52,0	0,815	1,075	1,235	-	0,890	1,095	52,0
54,0	0,620	0,860	1,000	-	-	0,865	54,0
56,0	-	0,660	0,775	-	-	-	56,0

Load charts • Traglasten • Capacités de levage • Capacidades  
 Carapità • Diagramas de carga • Таблицы грузоподъемности

Swingaway • Klappspitze • Extension treillis • Plumín • Falcone • Jib • Складной удлинитель стрелы



m	11,0 m			18,0 m			m
	0°	20°	40°	0°	20°	40°	
14,0	6,520	-	-	-	-	-	14,0
16,0	6,380	-	-	4,360	-	-	16,0
18,0	6,240	6,425	-	4,360	-	-	18,0
20,0	6,105	6,285	6,560	4,295	-	-	20,0
22,0	5,970	6,150	6,430	4,235	4,375	-	22,0
24,0	5,025	5,740	6,175	4,170	4,290	-	24,0
26,0	4,180	4,830	5,365	4,110	4,190	3,635	26,0
28,0	3,455	4,045	4,505	3,750	4,090	3,580	28,0
30,0	2,820	3,355	3,720	3,125	4,000	3,530	30,0
32,0	2,265	2,750	3,035	2,580	3,385	3,485	32,0
34,0	1,775	2,215	2,445	2,095	2,835	3,445	34,0
36,0	1,335	1,735	1,925	1,660	2,340	2,890	36,0
38,0	0,920	1,300	1,465	1,270	1,895	2,390	38,0
40,0	0,545	0,900	1,050	0,915	1,490	1,930	40,0
42,0	-	0,510	0,685	0,595	1,120	1,510	42,0
44,0	-	-	-	-	0,785	1,125	44,0
46,0	-	-	-	-	-	0,770	46,0

Weight reductions • Gewichtsreduzierung durch Lastaufnahmemittel • Reductions de charge  
Reducciones de peso • Riduzioni di peso • Reduções de peso • Снижение веса

Auxiliary boom nose / Hilfsrollenkopf / Tête de flèche auxiliaire / Cabeza auxiliar / Falconcino ausiliario in testa al braccio / Cabeçote da lança auxiliar / Вспомогательный оголовок стрелы	54 kg
Hookblocks / Hakenflaschen / Mouffles / Ganchos / Ganci / Cadernais / Крюковой блок	
118 tonne 8 sheave / Seilrollen / Réas / Poleas / Carrucole / Roldanas / блок	1089 kg
73 tonne 5 sheave / Seilrollen / Réas / Poleas / Carrucole / Roldanas / блок	725 kg
9,1 tonne overhaul ball / 9,1 t Kugelhaken / Crochet simple de 9,1 tonnes / Ganho de bola de 9,1 toneladas / Boz-zello a palla da 9,1 tonnellate / Bola e gancho de 9,1 toneladas / 9,1-крюк с шаром утяжелителем	313 kg
10-18 m bifold swingaway fly jib / Doppelklappspitze / Extension de flèche repliable / Plumín Plegable / Prolunga ripiegabile del braccio / Extensão da lança articulada. / складной удлинитель стрелы	
11 m erected / Klappspitze vorgebaut / Déplié / Montado / Montato / Montado / смонтированный	2386 kg
18 m erected / Klappspitze vorgebaut / Déplié / Montado / Montato / Montado / смонтированный	4472 kg
25,9 m jib erected / Spitze vorgebaut / Déplié / Montado / Montato / Montado / смонтированный	6396 kg
33,8 m jib erected / Spitze vorgebaut / Déplié / Montado / Montato / Montado / смонтированный	8800 kg

Note: All load handling devices and boom attachments are considered part of the load and suitable allowances must be made for their combined weights.

Hinweis: Alle Lastaufnahmemittel und jede Zusatzausrüstung des Hauptauslegers werden als Teil der Traglast betrachtet und ihre kombinierten Gewichte müssen beim Feststellen der Nettolast entsprechend berücksichtigt (abgezogen) werden.

Remarque: Les équipements complémentaires et accessoires de levage sont considérés comme faisant partie de la charge; les réductions de charges de leurs poids combinés doivent être effectuées.

Nota: Todos los aparatos de elevación e implementos de pluma son considerados parte de la carga y deben ser tenidos en cuenta para calcular los pesos a elevar.

Nota: Tutti gli accessori di sollevamento e le opzioni montate sul braccio sono considerati parte del carico e devono essere effettuate adeguate deduzioni per i loro pesi combinati.


Nota: Todos os acessórios de elevação e opcionais de lança contribuem para a carga a elevar pelo que devem ser tidos em conta nos cálculos dos pesos a elevar.

Примечание: все грузочно-разгрузочные устройства и дополнительные приспособления стрелы считаются частью груза, поэтому их массу нужно прибавлять к массе груза.


Superstructure

 Boom


12,8 m – 48,8 m, five section, sequenced synchronized full power boom. Maximum tip height: 51,5 m.

 Bifold swingaway extension


11,0 m - 18,0 m offsettable bifold lattice swingaway extension. Offsets 0°, 20° and 40°. Stows alongside base boom section. Maximum tip height: 69,2 m.

 \*Lattice Swingaway inserts

2 x 8 m lattice extension inserts. Installs between the boom nose and bifold extension, non-stowable. Maximum tip height: 85,0 m.

 Boom elevation

One double acting hydraulic cylinder with integral holding valve provides elevation from -3° to +78°.

 Load moment and anti-two block system


Standard "Graphic Display" load moment and anti-two block system with audio-visual warning and control lever lockout. These systems provide electronic display of boom angle, length, radius, tip height, relative load moment, maximum permissible load, load indication and warning of impending two-block condition. The standard Work Area Definition System allows the operator to pre-select and define safe working areas. If the crane approaches the pre-set limits, audio-visual warnings aid the operator in avoiding job-site obstructions.

 Cab


Full-vision, all-steel fabricated with acoustical lining and tinted safety glass throughout. Cab tilts to +20 degrees. Deluxe seat incorporates armrest-mounted hydraulic single-axis controllers. Dash panel incorporates gauges for all engine functions. Other standard features include: hot water heater, cab circulating air fan, air conditioning, sliding side and rear windows, sliding skylight with electric wiper and sunscreen, electric windshield wash/wipe, fire extinguisher and seat belt.

 Slewing

Two speed, planetary swing drive with foot applied multi-disc wet brake. Spring applied, hydraulically released swing brake. 360° positive swing lock and two position mechanical house lock, both operated from cab. Maximum speed: 2,5 RPM.

 Counterweight

18144 kg. Hydraulically installed and removed.

 Hydraulic system

Six main pumps with a combined capacity of 776 LPM. Maximum operating pressure: 331 bar. Two individual post pressure compensated valve banks. Return line type filter with full flow by-pass protection and service indicator. Replaceable cartridge with micron filtration rating of 5/12/16. 1230 L hyd. reservoir. Remote mounted oil cooler with thermostatically controlled hydraulic driven motor, fan/air to oil. System pressure test ports.

 Hoist

Planetary reduction with automatic spring applied multi-disc wet brake. Grooved drum. Electronic hoist drum rotation indicators, and hoist drum cable followers.

Maximum single line pull:

- 1st layer: 8740 kg.
- 3rd layer: 7432 kg.
- 5th layer: 6464 kg.

Maximum Permissible Line Pull: 7620 kg with 6X37 class rope.  
7620 kg with 35X7 rotation resistant rope.

Maximum Single Line Speed: 171 m/min.

Rope Construction: 6X36 EIPS IWRC, Special Flexible.  
35x7 Flex-X, Rotation Resistant.

Rope Diameter: 19 mm.

Rope Length: Main Hoist: 290 m.


Auxiliary Hoist: 213 m.

Maximum Rope Stowage: 368 m.

Carrier

 Carrier frame

Box section frame fabricated from high-strength, low alloy steel. Removable outrigger housings, front/rear towing and tie down lugs.

 Outriggers

Four hydraulic telescoping single-stage double box beam outriggers with inverted jacks and integral holding valves. Three position setting, 0%, 50% and fully extended. Outrigger boxes removable for ease of transportation. All steel fabricated, quick release type outrigger floats, 775 mm diameter. Maximum outrigger pad load: 75298 kg. Controls and crane level indicator located in cab.

 Engine

**Tier 3 / Euro mot 3A:** Cummins QSC 8.3L diesel, six cylinders, 224 kW at 2.200 rpm. Maximum torque: 1356 Nm at 1600 rpm. Note: Required for sale outside of North America and European Union countries. **Tier 4f / Euro mot 4:** Cummins QSL 8.3L diesel, six-cylinder, turbo charged with Cummins diesel particulate exhaust filter/muffler. Meets U.S. E.P.A. Tier IV and E.U. Stage IIIB. 239 kW at 2200 rpm. Maximum torque: 1383 Nm at 1500 rpm. Fuel requirements: Maximum of 15 PPM sulphur content (Ultra Low Diesel Fuel) Note: Tier IV engine required in North America and European Union countries. Fuel tank capacity: 379 l.

 Transmission

Sequential powershift with 6 forward and 3 reverse speeds. Front axle disconnect for 4 x 2 travel.

 Drive/Steer


4 x 4. Fully independent power steering: Front: Full hydraulic steering wheel controlled. Rear: Full hydraulic switch controlled. Provides infinite variations of 4 main steering modes: front only, rear only, crab and coordinated. Rear steer indicator.

 Axles

Front: Drive/steer with differential and planetary reduction hubs rigid mounted to frame. Rear: Drive/steer with differential and planetary reduction hubs pivot mounted to frame.

 Tyres


Std. 33,25 X 29 - 38 bias ply.

 Brakes

Full hydraulic split circuit operating on all wheels. Spring-applied, hydraulically released parking brake mounted on front axle.

 Lights

Full lighting including turn indicators, head, tail, brake and hazard warning lights.

 Maximum speed

24 km/h.

 Gradeability (theoretical)

73% Based on 79460 kg GVW, 33,25 x 29 tires, pumps engaged, 48,8 m boom, plus 18 m swingaway, 18144 kg counterweight, hookblock and headache ball.

 Electrical system

Two 12 V - maintenance free batteries. 12 V starting and lighting, circuit breakers.

\* Optional equipment

- Auxiliary lighting package (includes cab mounted amber flashing light, hoist mounted work light, single base boom mounted floodlights and rubber mat for stowage trough).
- Rear Pintle Hook.
- Cab controlled cross axle differential locks, (front and rear).
- PAT event recorder down load kit.
- Wind speed indicator (wireless).
- Hydraulic bi-fold swingaway.
- Boom extension inserts.
- CE mark conformance.
- CraneSTAR fleet management system.

\*Denotes optional equipment









## Manitowoc Cranes

### Regional headquarters

#### Americas

**Milwaukee, Wisconsin, USA**

Tel: +1 414 760 4600

**Shady Grove, Pennsylvania, USA**

Tel: +1 717 597 8121

#### Europe and Africa

**Dardilly, France - TOWERS**

Tel: +33 (0)4 72 18 20 20

**Wilhelmshaven, Germany - MOBILE**

Tel: +49 (0) 4421 294 0

#### APAC

**Shanghai, China**

Tel: +86 21 6457 0066

**Singapore**

Tel: +65 6264 1188

#### Middle East and India

**Dubai, UAE**

Tel: +971 4 8862677

This document is non-contractual. Constant improvement and engineering progress make it necessary that we reserve the right to make specification, equipment, and price changes without notice. Illustrations shown may include optional equipment and accessories and may not include all standard equipment.

Die Angaben in diesem Dokument erfolgen ohne Gewähr. Wir verbessern unsere Produkte ständig und integrieren den technischen Fortschritt. Aus diesem Grund behalten wir uns das Recht vor, die technischen Daten, die Ausstattungsdetails und die Preise unserer Maschinen ohne Vorankündigung zu ändern.

Ce document est non-contractuel. Du fait de sa politique d'amélioration constante de ses produits liée au progrès technique, la Société se réserve le droit de procéder sans préavis à des changements de spécifications, d'équipement ou de prix. Les illustrations peuvent comporter des équipements ou accessoires optionnels ou ne pas comporter des équipements standards.

Este documento no es contractual. El perfeccionamiento constante y el avance tecnológico hacen necesario que la empresa se reserve el derecho de efectuar cambios en las especificaciones, equipo y precios sin previo aviso. En las ilustraciones se puede incluir equipo y accesorios opcionales y es posible que no se muestre el equipo normal.

Documento non contrattuale. In considerazione della sua politica di costante miglioramento dei prodotti connesso al progresso tecnico, la Società si riserva il diritto di modificare senza preavviso specifiche, equipaggiamenti o prezzi. Le illustrazioni possono contenere equipaggiamenti o accessori optional o non contenere equipaggiamenti standard.

Este documento não se reveste de qualquer carácter contratual. A introdução constante de melhorias e o progresso da engenharia tornam necessário reservarmos-nos o direito de introduzir alterações nas características técnicas, no equipamento e no preço sem qualquer aviso prévio. As ilustrações aqui apresentadas podem incluir equipamento e acessórios adicionais, podendo não incluir todo o equipamento padrão.

Данный документ не является контрактным. Принимая во внимание необходимость постоянного совершенствования и модернизации мы оставляем за собой право изменять спецификации, конструкции и стоимость без предварительного уведомления. Приведенные иллюстрации могут содержать дополнительные компоненты и принадлежности, не входящие в стандартный комплект поставки оборудования.